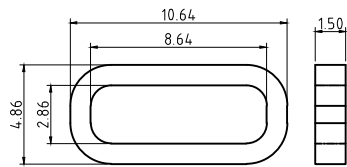


RECOMMENDED PCB LAYOUT (TOP VIEW)
(GENERAL TOLERANCE ± 0.05)



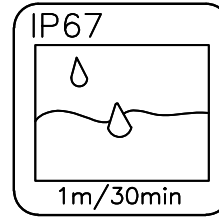
建议胶圈尺寸

| REV | DESCRIPTION | DATE | APPROVED |
|-----|-------------|------------|----------|
| A | 新版发行 | 2018.09.26 | HHM |

NOTES:

SPECIFICATION:

- CURRENT RATING: 3.0A MAX
- DIELECTRIC WITHSTAND VOLTAGE: 100VAC
- TEMPERATURE RANGE: -30 ° C ~ 85 ° C
- CONTACT RESISTANCE: 40 MILLIONHM MAX
- INSULATION RESISTANCE: 100 MEGOHMS MIN.
- INSERTION FORCE : 5N~20N
- UNMATING FORCE: 8N~20N
- DURABILITY: 10,000 CYCLES



| | | | |
|-----|-------------|-----|-------------|
| A1 | GND | B12 | GND |
| A4 | VBUS | B9 | VBUS |
| A5 | CC1 | B8 | SBU2 |
| A6 | DP1 | B7 | DN2 |
| A7 | DN1 | B6 | DP2 |
| A8 | SBU1 | B5 | CC2 |
| A9 | VBUS | B4 | VBUS |
| A12 | GND | B1 | GND |
| PIN | SIGNAL NAME | PIN | SIGNAL NAME |

| NO. | DESCRIPTION | MATERIAL | REMARKS | QTY |
|-----|-----------------|--------------------------|--------------|------|
| 6 | 防水圈 | 硅胶 | BLACK | 1PCS |
| 5 | SHELL | STAINLESS STEEL | NI Plated | 1PCS |
| 4 | SHIELDING PLATE | STAINLESS STEEL | NI Plated | 1PCS |
| 3 | CONTACT | COPPER ALLOY | Au/Ni Plated | 1SET |
| 2 | SHELL HOUSING | HIGH TEMPERATURE PLASTIC | BLACK | 1PCS |
| 1 | HOUSING | HIGH TEMPERATURE PLASTIC | BLACK | 1PCS |

| CUSTOMER DRAWING | | | 铭创科技(东莞)有限公司 Mingchuang Technology (Dongguan) Co., Ltd. | | |
|---|--------------|-----------------------|--|---------------------|--|
| UNITS mm | SCALE 1:1 | SHEET 1 OF 1 | TITLE 防水TYPE C母座16PIN 立式四脚插板DIP L=7.1 全塑 | | |
| PROJECTION: | DRAW: DAP | CHECK: HWT | MAT'L SEE TABLE | FINISH SEE TABLE | |
| GENERAL TOLERANCE 0. ±0.50 0.0 ±0.30 0.00 ±0.10 0.° ±2° 0.0° ±1° | APPD: HHM | DWG. NO. B09W1607A | PART NO. | SIZE A4 | |